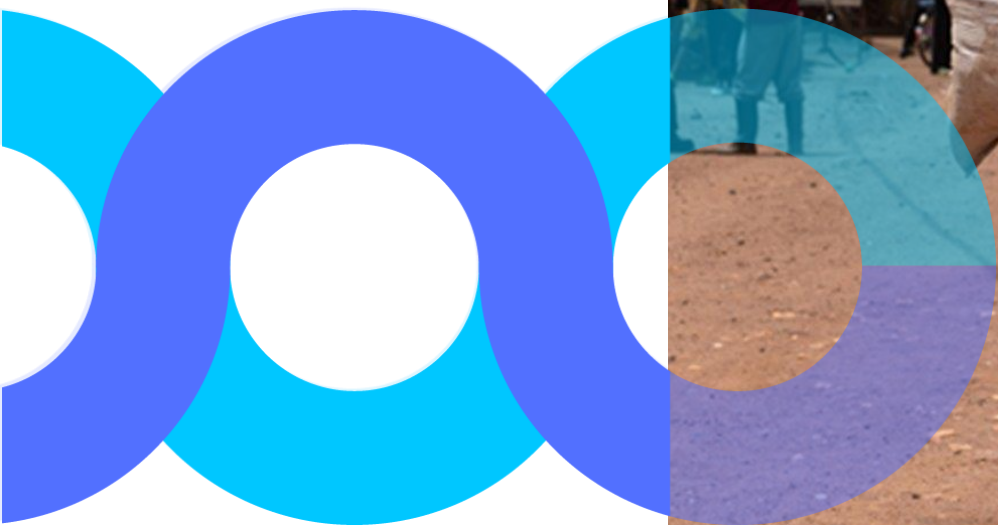




Presented by

Myriam PEREZ

4th February 2025



www.icra.global



Sustainable Agri-Food Systems Intelligence Science-Policy Interface

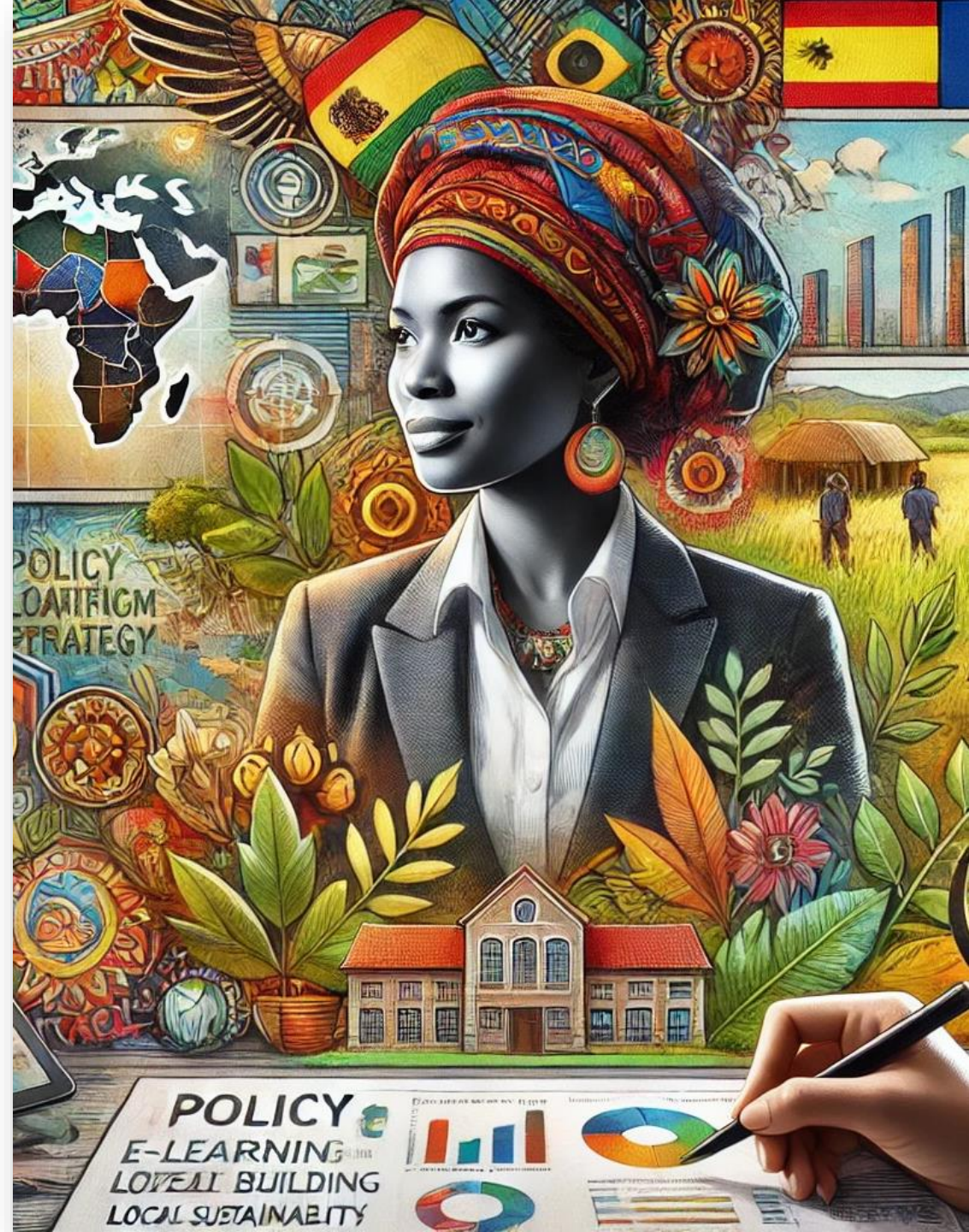
SASI-SPI

Sharing experience on facilitating
the science-policy interface

This is how AI depicts my professional life...

Prompt:

“Based on what you know about me, draw a picture of what you think my current professional life looks like?”



This is how AI depicts my professional life during 2024...

Prompt:

"Can you create the image that sums up 2024 in my professional life?"



This is how AI depicts ICRA's current action...





Welcome to iCRA

Building trust for zero hunger

[Who we are](#) →



Stay tuned!

SASI-SPI project, today

Several Institutions members of Agrinatura developed the proposal for the request coming from DG INTPA (CIRAD, SLU and ICRA)



SASI-SPI is a 5-year (2023-2027), € 11.5 million project implemented by members of AGRINATURA to support the DG-INTPA.

The overall objective of SASI-SPI is to **contribute to the economic, social, and environmental sustainability of Aquatic and Agri-Food Systems (SAAFS) in Africa, Asia, Latin America and the Caribbean.**

The SASI-SPI has four specific objectives and corresponding Work Streams (WS).



WS0 Coordination and Management

Burning issues

- **WS1: Policy Intelligence and Insights - Timely advice and science-based insights for DG-INTPA on global issues related to SAAFS.**



Thematic issues, in depth studies

- **WS2: New Narratives and Frameworks (Science Policy Labs) - Developing fresh narratives, policy options, and reference frameworks for the transition to SAAFS.**



Work at country level

- **WS3: Transition Support Models (Living Labs) - Creating empirically tested support models for the sustainable transformation of national agrifood systems, using participatory and science-based decision-making.**
- **WS4: Communication and Stakeholder Capacity Building - Enhancing the knowledge and capacity of public, private, and civil society stakeholders to engage, lead, and advocate for the transition to SAAFS effectively.**



The science policy interface: Bridging research and policy

What is at stake? - How are scientists supposed to convey timely warnings and inform policymaking? – the case of COVID has put even more pressure on the scientific body

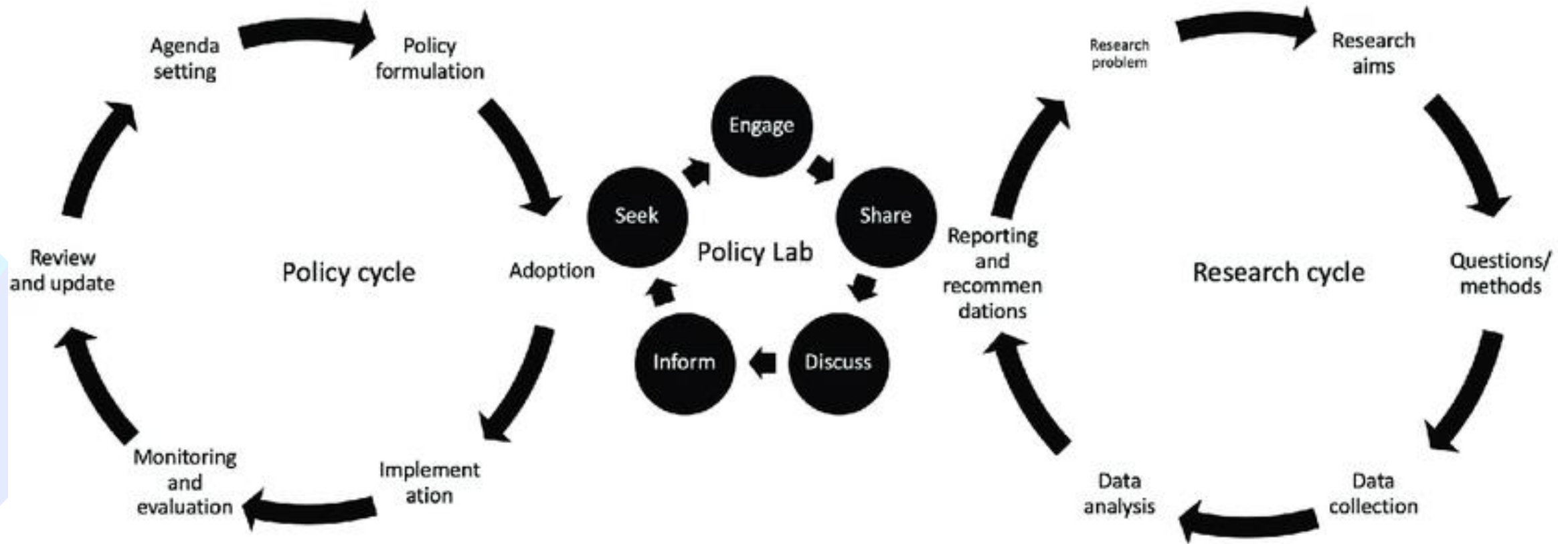
Some mechanisms to fulfil this mission but with limited impact...

- Intergovernmental Panel on Climate Change (IPCC)
- Intergovernmental Science– Policy Platform on Biodiversity and Ecosystems Services (IPBES)
- High Level Panel of Experts (HLPE) on food security and nutrition

So, Why is the science-policy interface a challenge today?

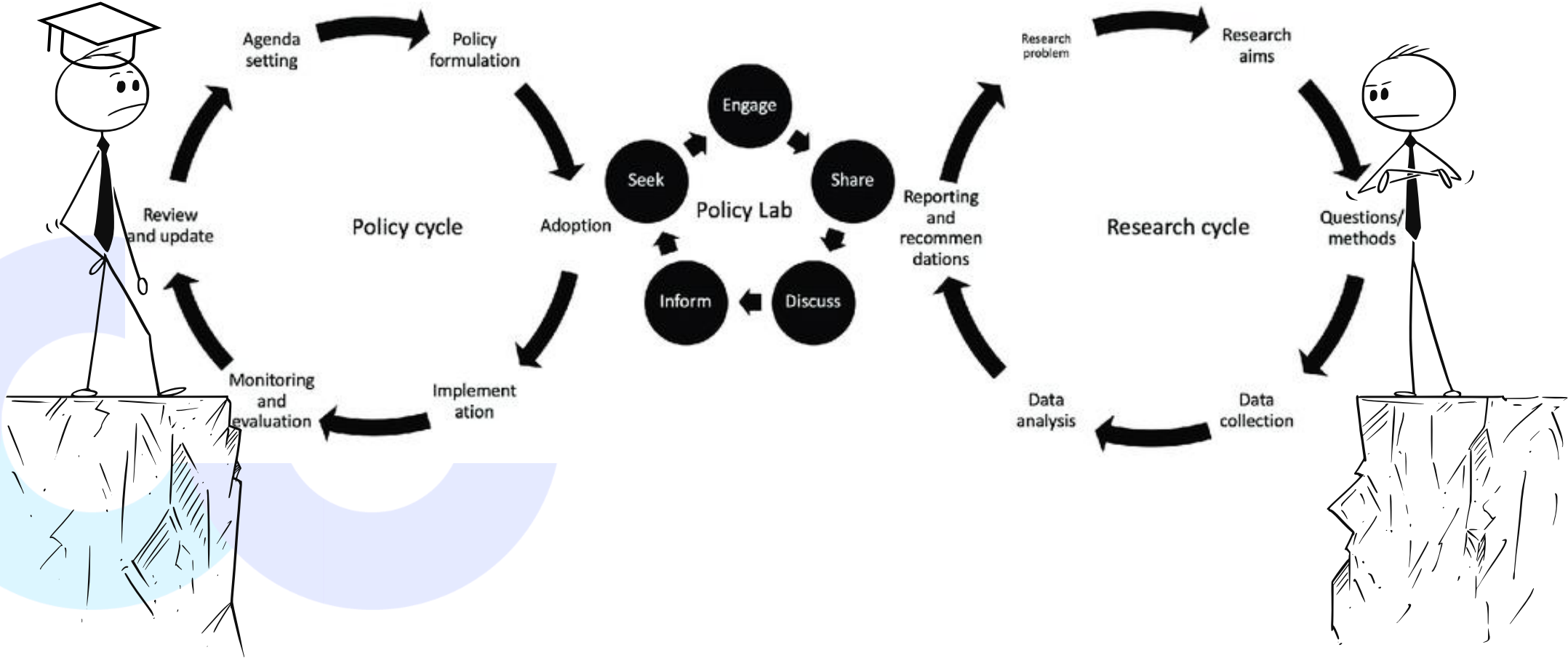
- **Complexity and uncertainty of modern problems** Issues like climate change, biodiversity loss, and global inequality are "wicked problems" that involve multiple sectors, disciplines, and stakeholders
- **Public mistrust** in science and institutions has grown, fuelled by misinformation, political polarization, and perceived elitism in scientific communities
- Policymakers may selectively use scientific evidence to justify pre-existing positions (a phenomenon known as "**policy-based evidence-making**")

The science policy interface: Bridging research and policy



Policy Lab bridging research and policy cycles. Ojha, 2019 (from Nepal's community forest governance)

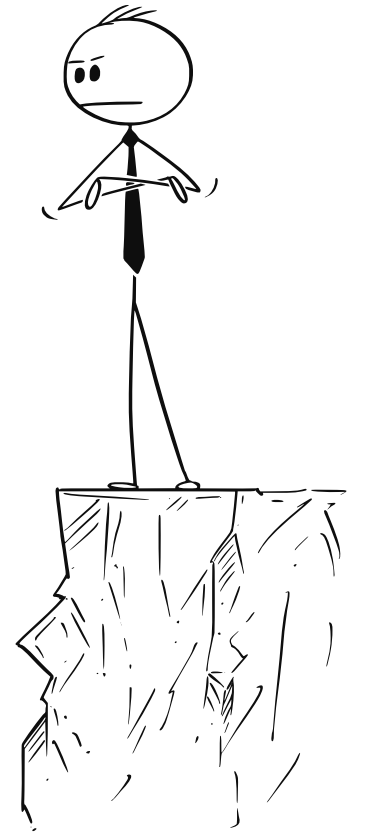
Why is it challenging?



Why is it challenging?

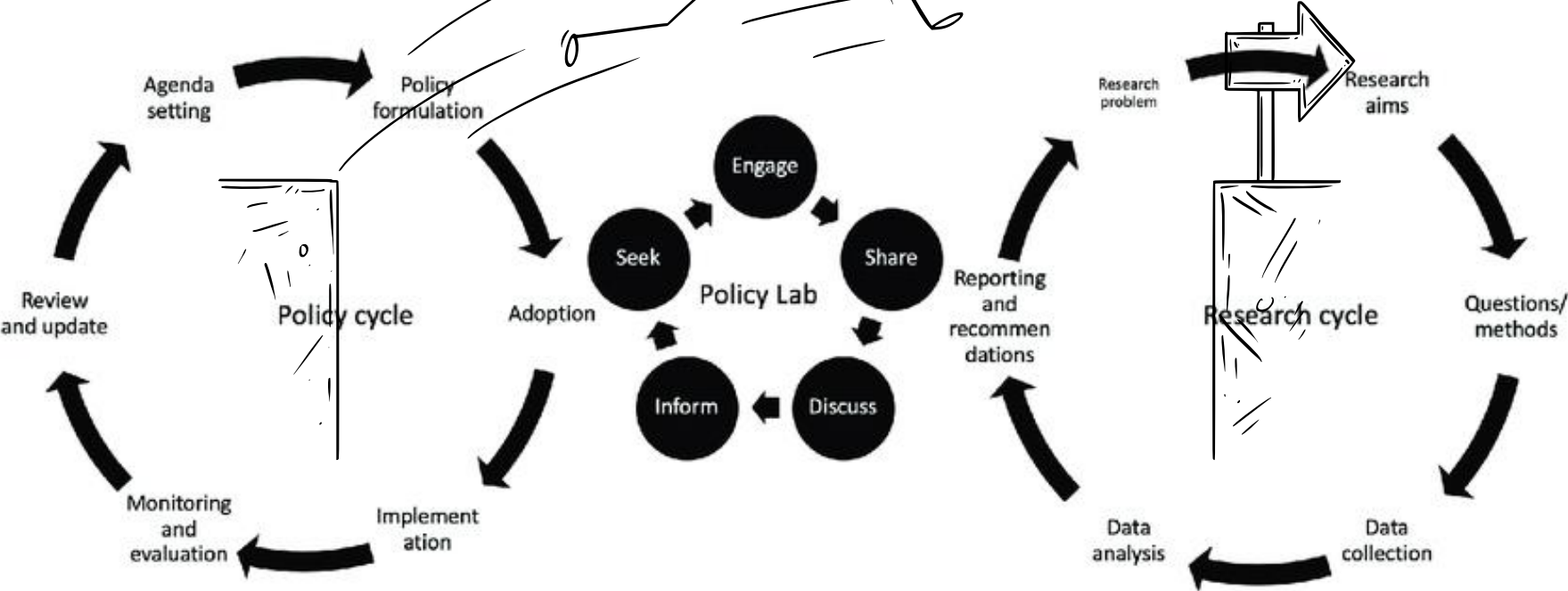


There is a real gap between
research and policy making

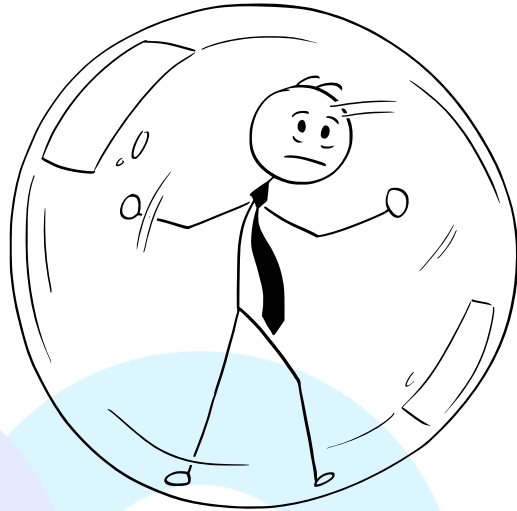


So, how to handle this?

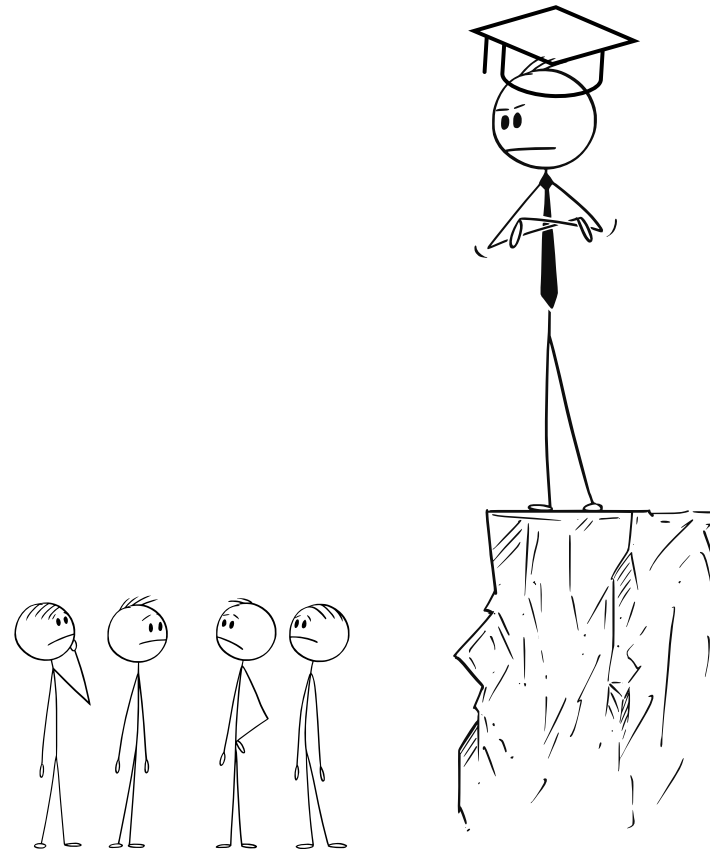
There is a need to have
a THIRD ACTOR TO FILL THE GAP
RUNNING THE ROLE OF FACILITATOR



And beyond, why is it still challenging?

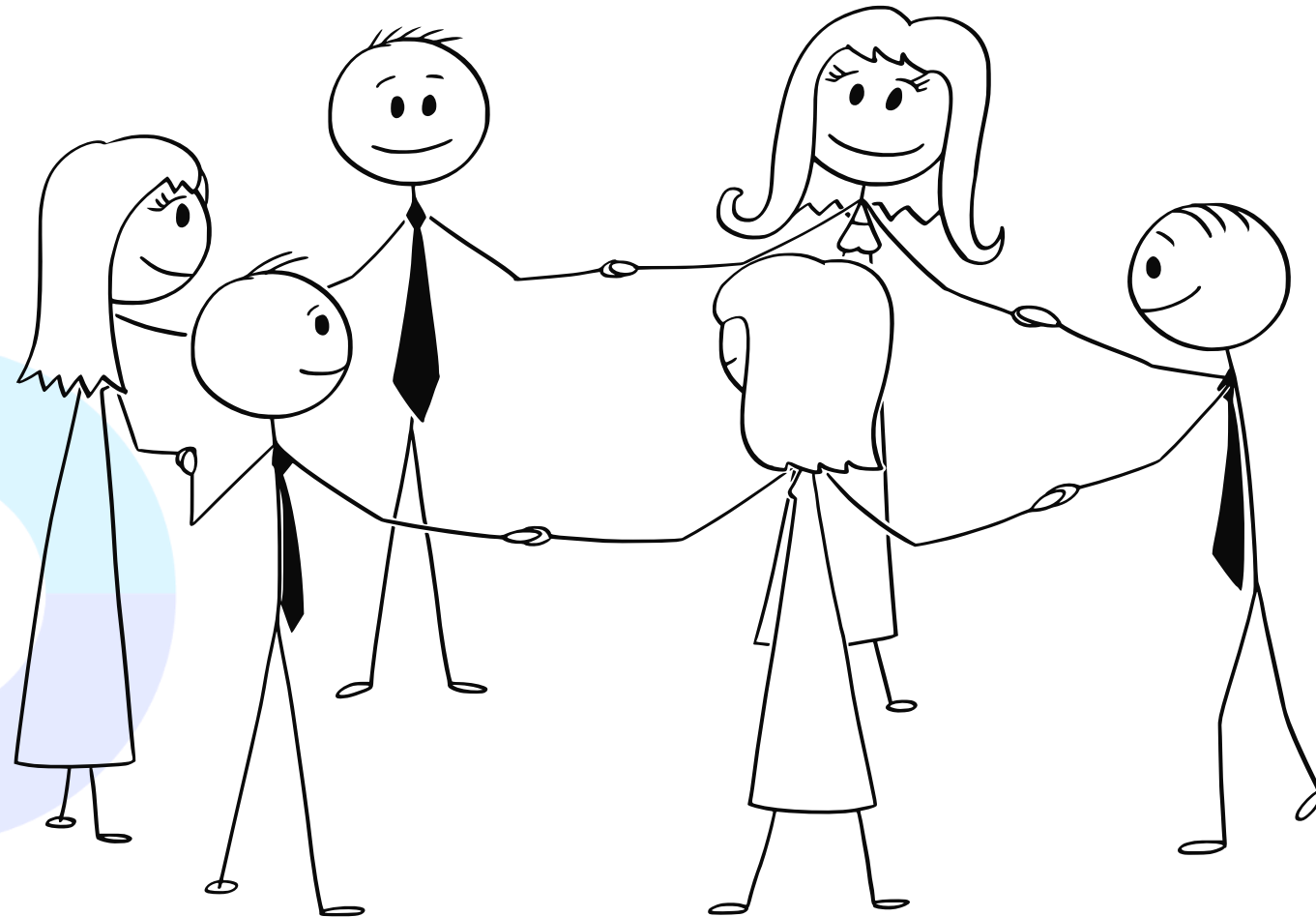


There is a real gap between
research, policy making and
society or end "users"



So, how to handle this?

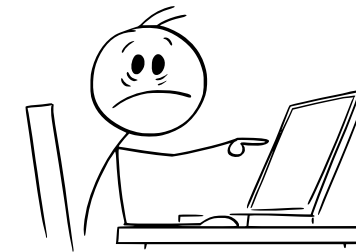
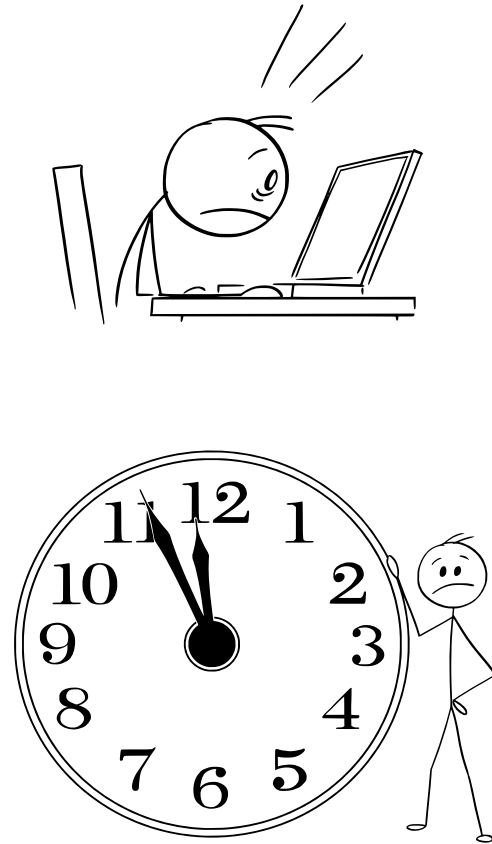
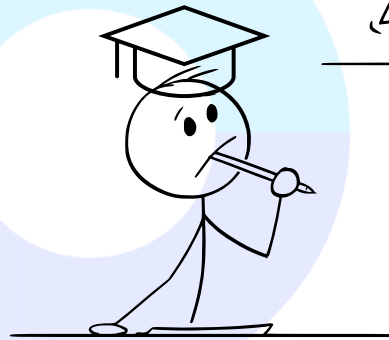
There is a need
to have
a THIRD ACTOR TO
BUILD TRUSTED
RELATIONS WHICH
ENABLE JOINT
ACTION



Why is there this gap?

TIME SCALE IS NOT THE SAME
ON RESEARCH AND ON POLICY MAKING

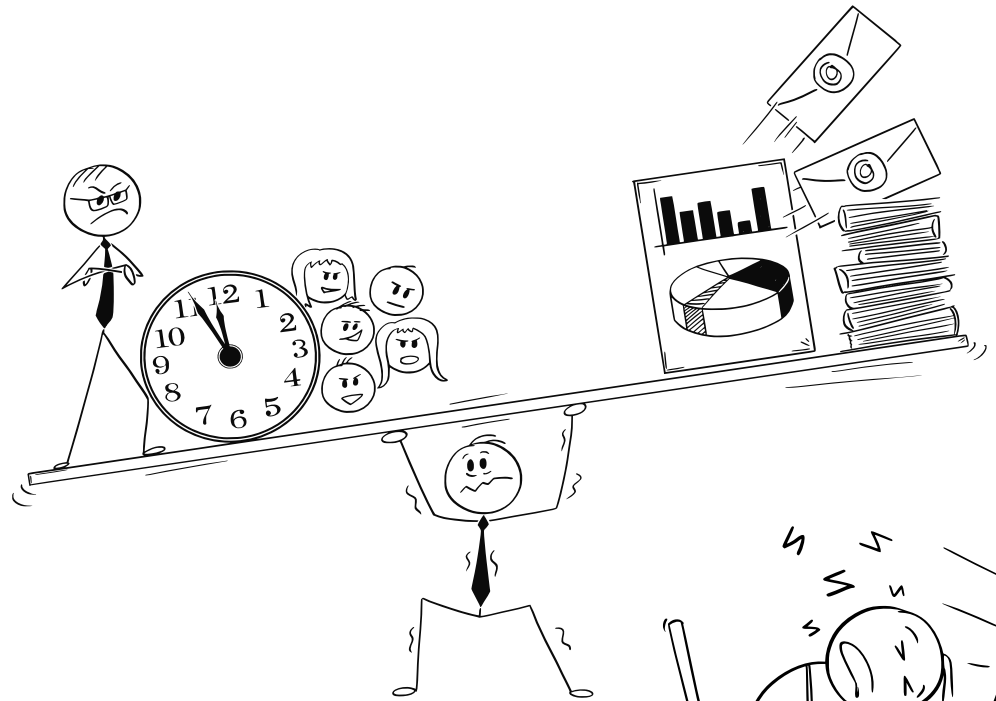
ACCURATE RESEARCH NEEDS TIME
FOR DATA COLLECTION AND
ANALYSIS



AND POLICY MAKING SOMETIMES
DEMAND QUICK REACTIONS

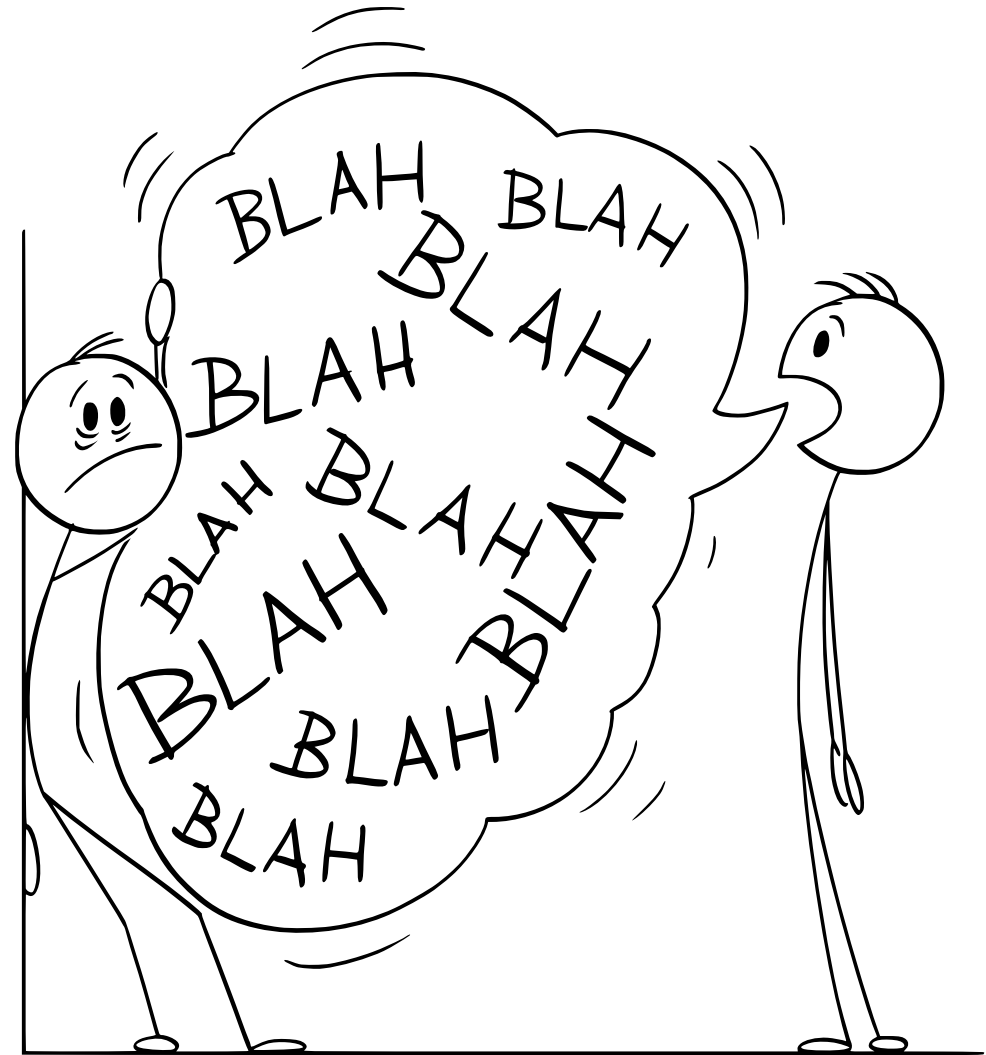
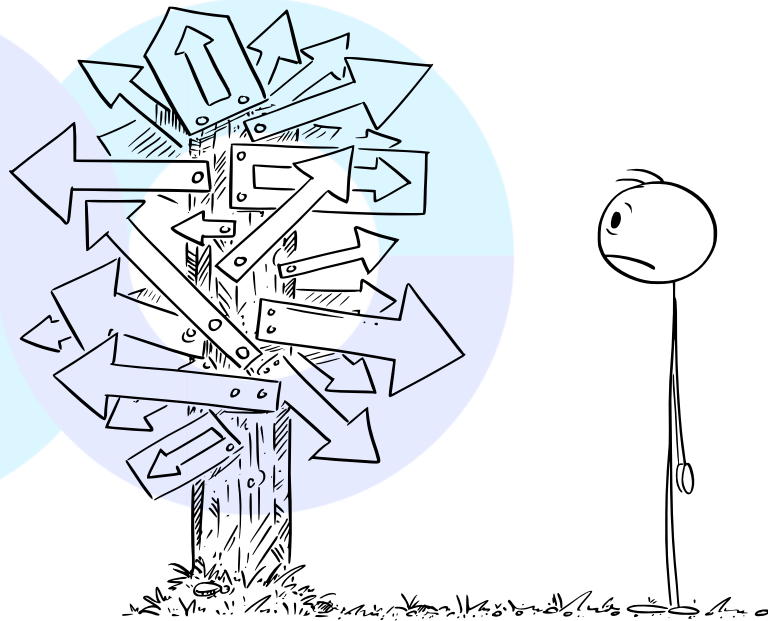
Why is there this gap?

RESEARCHERS NEED TO JUGGLE A
DIFFICULT BALANCE BETWEEN THE TIME PRESSURE
AND AN ACCURATE RESEARCH WORK



Why is there this gap?

COMMUNICATION IS NOT THE SAME...
RESEARCHERS TEND TO SHOW ALL POSSIBLE
OPTIONS, AND NEVER TAKE PART ON ONE BECAUSE
OF "OBJECTIVITY"

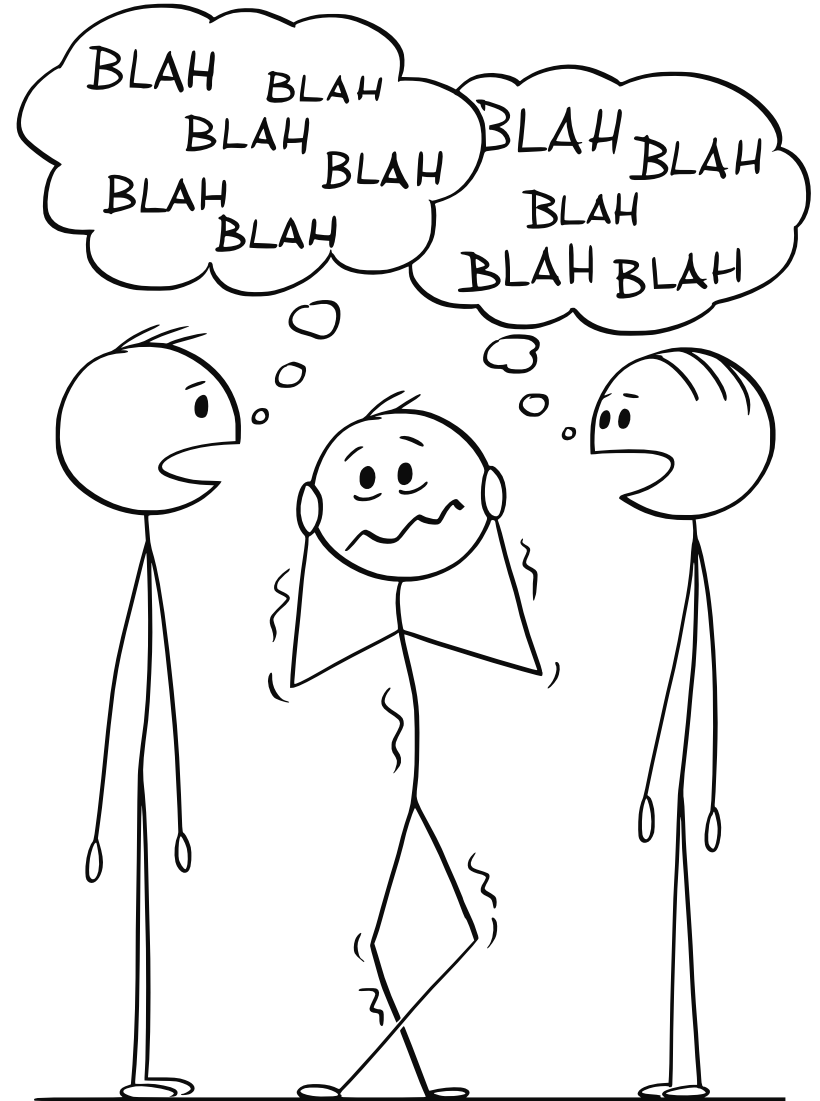


Why is it challenging?

COMMUNICATION IS NOT THE SAME

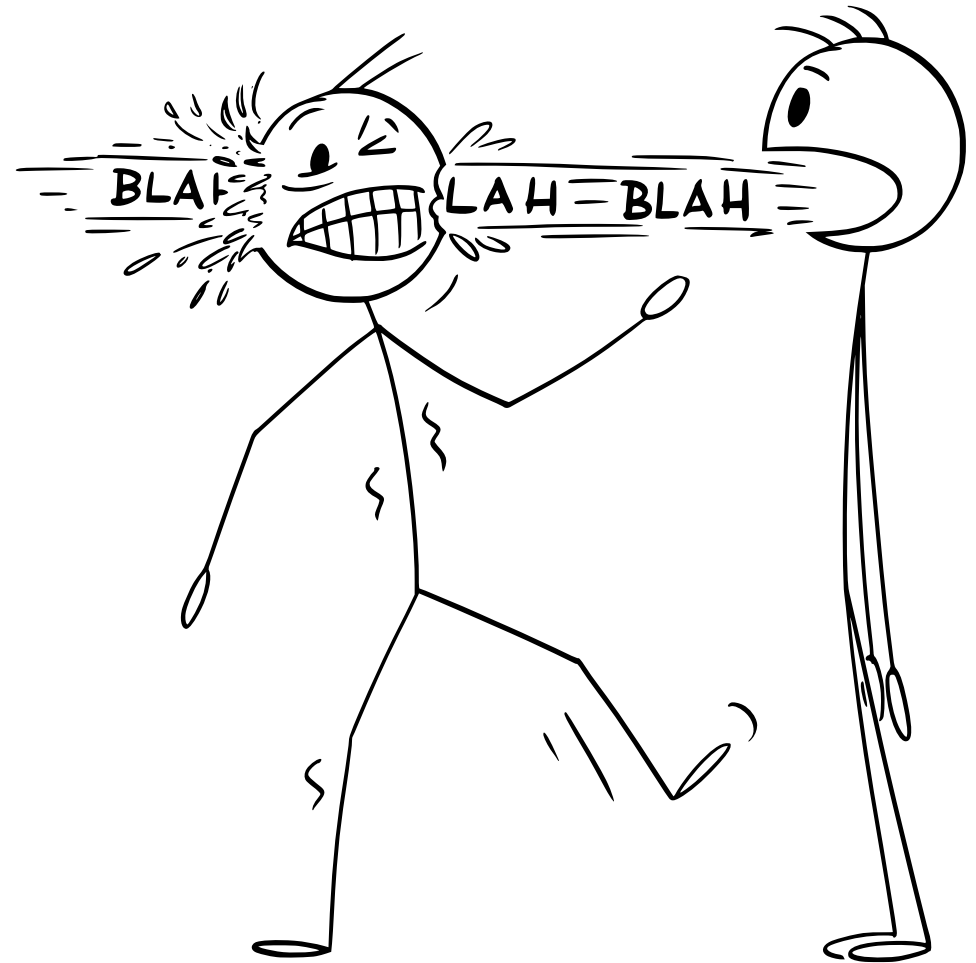
SOMETIMES RESEARCHERS ARE POSITIONED UNDER
DIFFERENT APPROACHES OR PARADIGMS TOWARDS A
SAME SUBJECT

EX: AGROECOLOGY VS AGRICULTURAL INTENSIFICATION



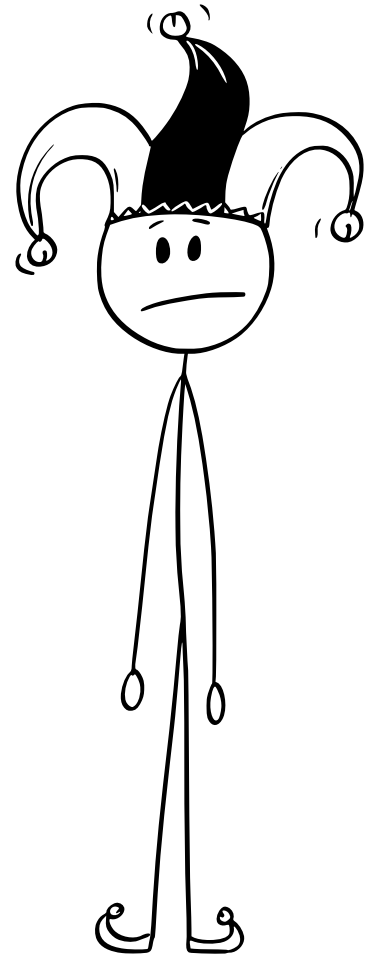
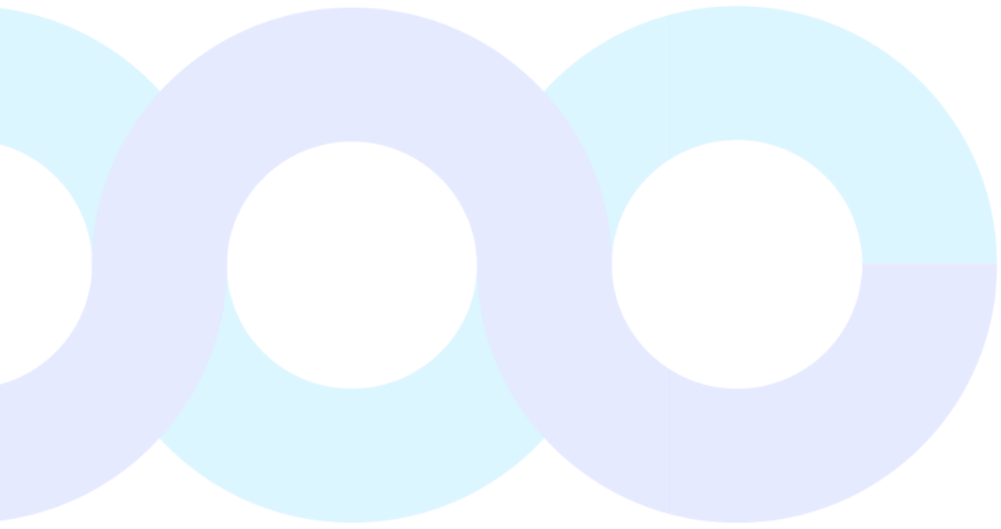
Why is it challenging?

COMMUNICATION WITHIN RESEARCH AND POLICY
can be very "aggressive"



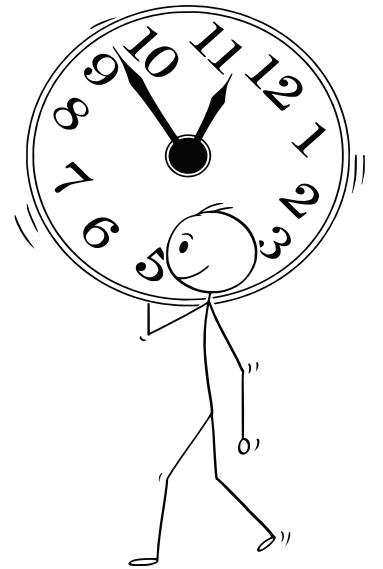
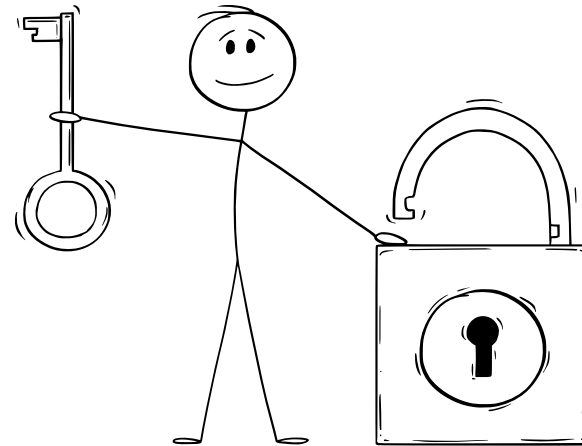
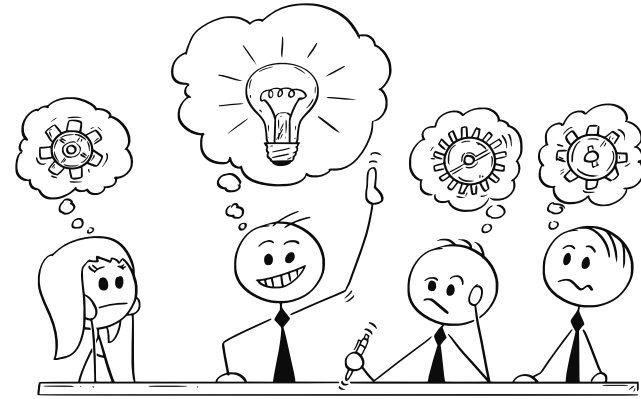
Lessons learnt...

THE FACILITATOR ROLE IS NOT ALWAYS
acknowledged...
AND IT IS EXHAUSTING



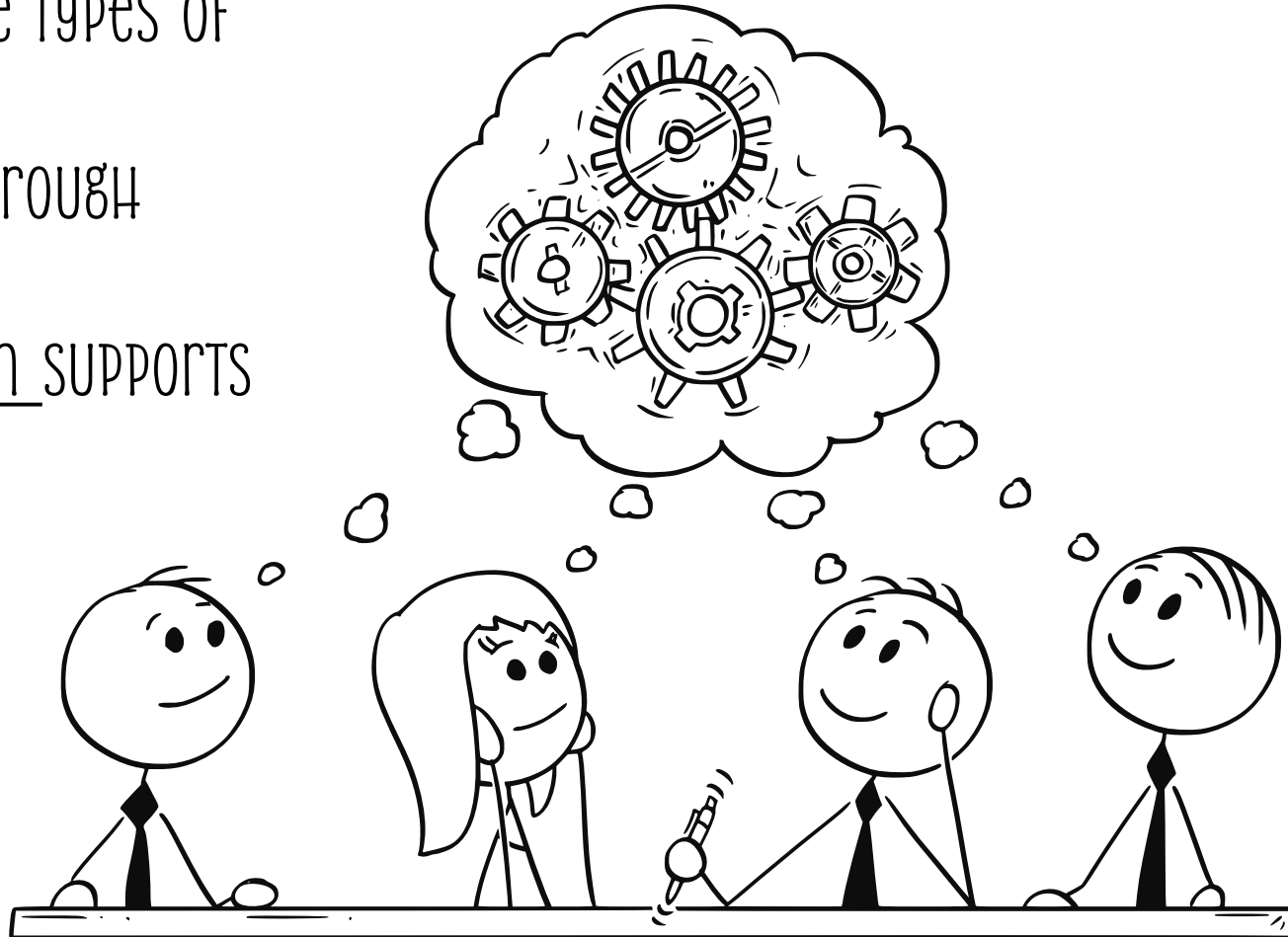
Some lessons learnt

- TRUST YOUR SELF, TRUST YOUR PROCESS AND THE OTHERS WILL TRUST YOU
- BE CREATIVE AND FLEXIBLE
- TAKE ALWAYS TIME FACTOR INTO CONSIDERATION ON YOUR PLANNING



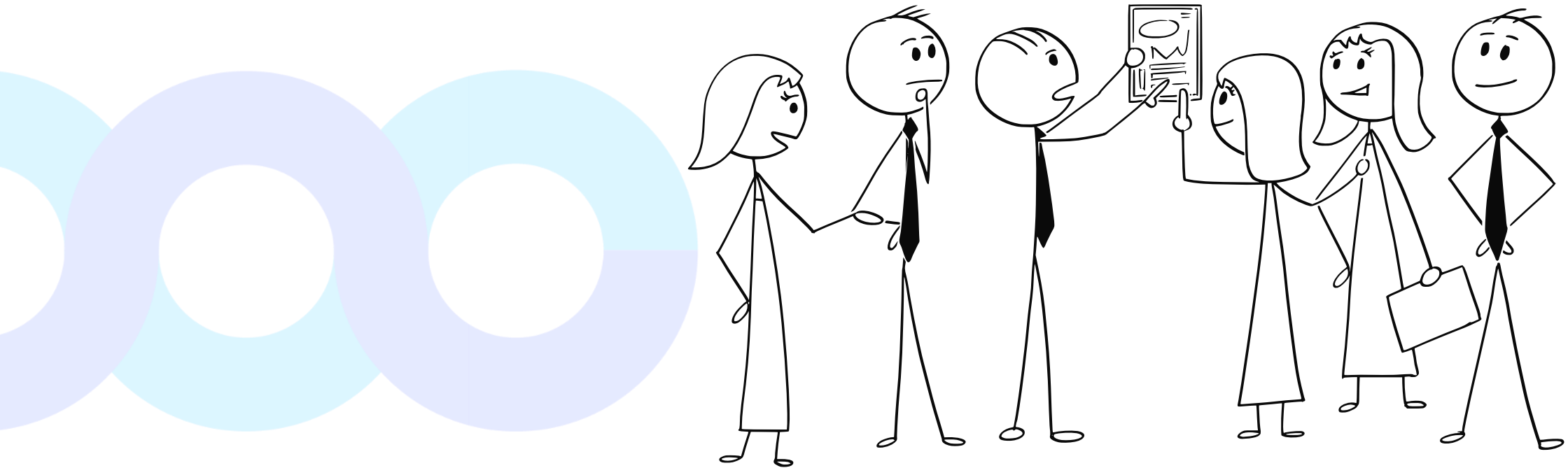
Some lessons learnt

- WELCOME and recognize DIVERSE TYPES OF KNOWLEDGE
- BUILD SHARED UNDERSTANDING THROUGH JOINT INTERACTIONS
- DEVELOP ADAPTED COMMUNICATION SUPPORTS

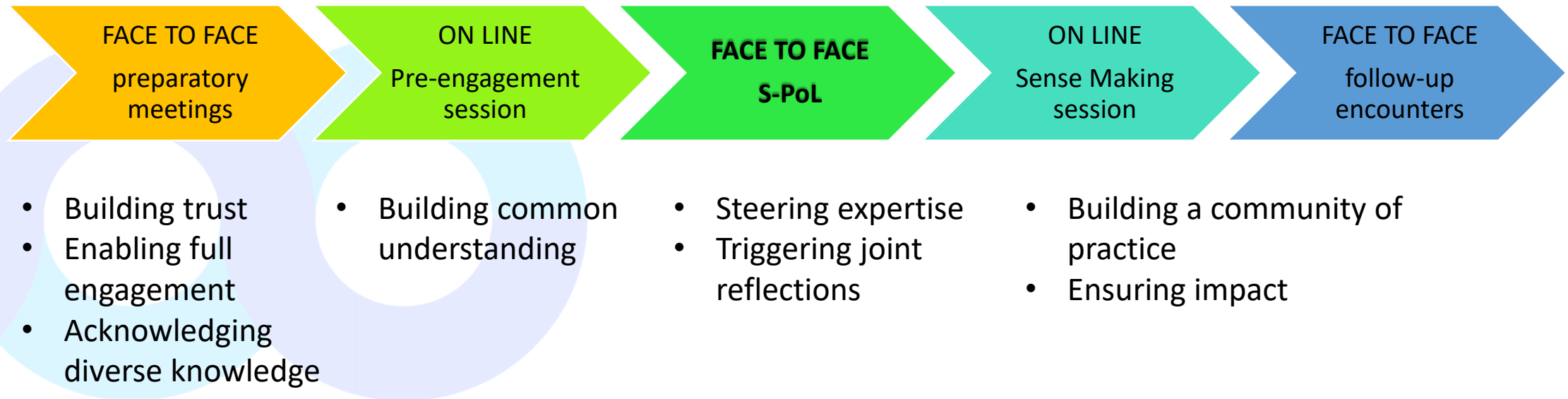


Some lessons learnt

- MAKING PEOPLE WORK TOGETHER ON CONCRETE SUBJECTS



Our process: Science Policy Lab



Connect with iCRA!



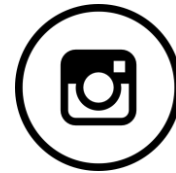
@ICRA



@ICRAedu



@icra – building trust



@icra.buildingtrust



info@icra.global



iCRA email community

My expectations

Learning from your experiences about:

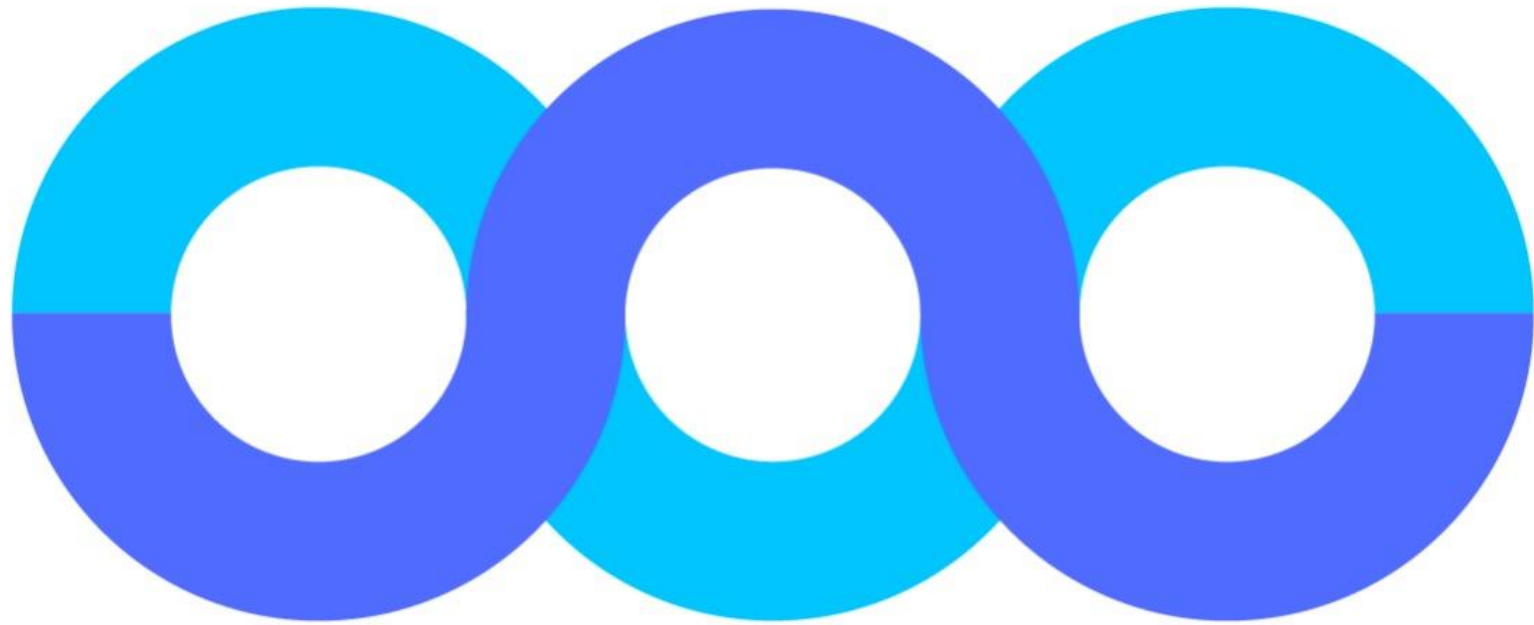
What are the most effective “deliverables” to be produced by a Think Tank? Policy brief, video, blog, podcast?

How to choose who needs to be around the table in a ThinkTank?

Who is the best leader for a ThinkTank?

How to enable a productive dialogue within the ThinkTank? What are the key needed skills?

Is a Think Tank always a tool to enable science-policy interface?



icra.global